



### Dew Farm Auction

Tuesday - March 8, 2022 | 2:00 pm  
The Dew Farm is a high quality, Class A farm containing 165.30 surveyed acres (159.06 tillable acres). The farm drains adequately and has an average Productivity Index of 143.3. The Dew Farm is located near the Illinois River commodity markets. The farm is being auctioned (bidder's choice), IN-PERSON (Edgewood Park Golf Club, McNabb IL) and LIVE ONLINE.

[Register](#)



### Fritsch Farm Auction

Friday - March 11, 2022 | 2:00 pm  
The 110.8723± surveyed acre, high quality Class A soils Fritsch Farm is a path of progress property annexed to Sandwich Illinois in Kendall County. Current land use is farmland, but zoned M-2. Open lease for 2022. The farm is being auctioned IN-PERSON (Sandwich VFW Post 1486, Sandwich IL) and LIVE ONLINE.

[Register](#)



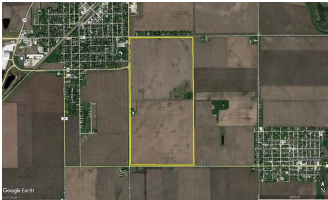
## Yorkville Farm Auction

Tuesday - March 15, 2022 | 2:00 pm

[Register](#)

The Yorkville Farm features an excellent location for future development. The farm contains Class A soils and drains well. Leased for 2022 at \$360 per tillable acre. Located at the corner of Ament and Immanuel Roads. Only 1½ miles west of IL Rt 47. Yorkville city limits are one mile north. Ronhill subdivision is across the road to the west. The farm is being auctioned IN-PERSON (Whitetail Ridge Golf Club, Yorkville IL) and LIVE ONLINE.

## Land Pro LLC Listings



Eaton Smith Farm

Large contiguous tract of high-quality farmland near I-55 interchange, just 70 miles southwest of Chicago. 2022 lease open.

322.22± surveyed acres (300.49± tillable, 10.00 CRP acres), Section 10, Greenfield Township, T.31N.-R.8E., Grundy County Illinois. PI 130.1 (Reddick, Andres). Home + buildings. Main Street, Storm Road, Rice Road frontage. Ray L. Brownfield, Broker



Sugar Grove 86 Farm

This 86-acre property lies in the path of progress. Situated near infrastructure facilities allowing for the future development of single-family homes. The gentle south facing slope could easily accommodate the development of a community solar farm and other green initiatives. Seller is willing to subdivide, if necessary.

86.869± acres (74.00± tillable). Subdivision Concept Plan available. Survey available. Sections 23 & 26, Sugar Grove Township, T.38N.-R.7E., Kane County IL. Adjacent to Aurora IL corp limits. Dave Oster, Broker



Larson Farm

The farm is adjacent to Wyanet Illinois. It is mostly all tillable and lends itself to many opportunities. If you are in the market to invest in a smaller farm, this is the one!

50.44± tax acres (48.92± tillable acres). PI 116.1. Section 21, Wyanet Township, Bureau County Illinois. Access from 5<sup>th</sup> Street. Chip Johnston, Broker