

Blue Palm, LLC



9.20.24



Jason J. Lestina, ALC AFM
Accredited Land Consultant
Accredited Farm Manager
Designated Seller's Agent
Land Pro LLC

815.546.8276c | jason@landprollc.us
2681 US Hwy 34 | Oswego, IL 60543
331.999.3490 | www.landprollc.us
September 25, 2024

Professional Land Specialists



Blue Palm, LLC

Google Aerials 1

Property Summary 2

Yield Information. 2

FSA Information 2

Milan Township Plat 3

Surety Aerial Map 4

Surety Topography Map 4

Surety Soils Maps and Table 5

FSA Map (Farm 7757, Tract 12014). 6

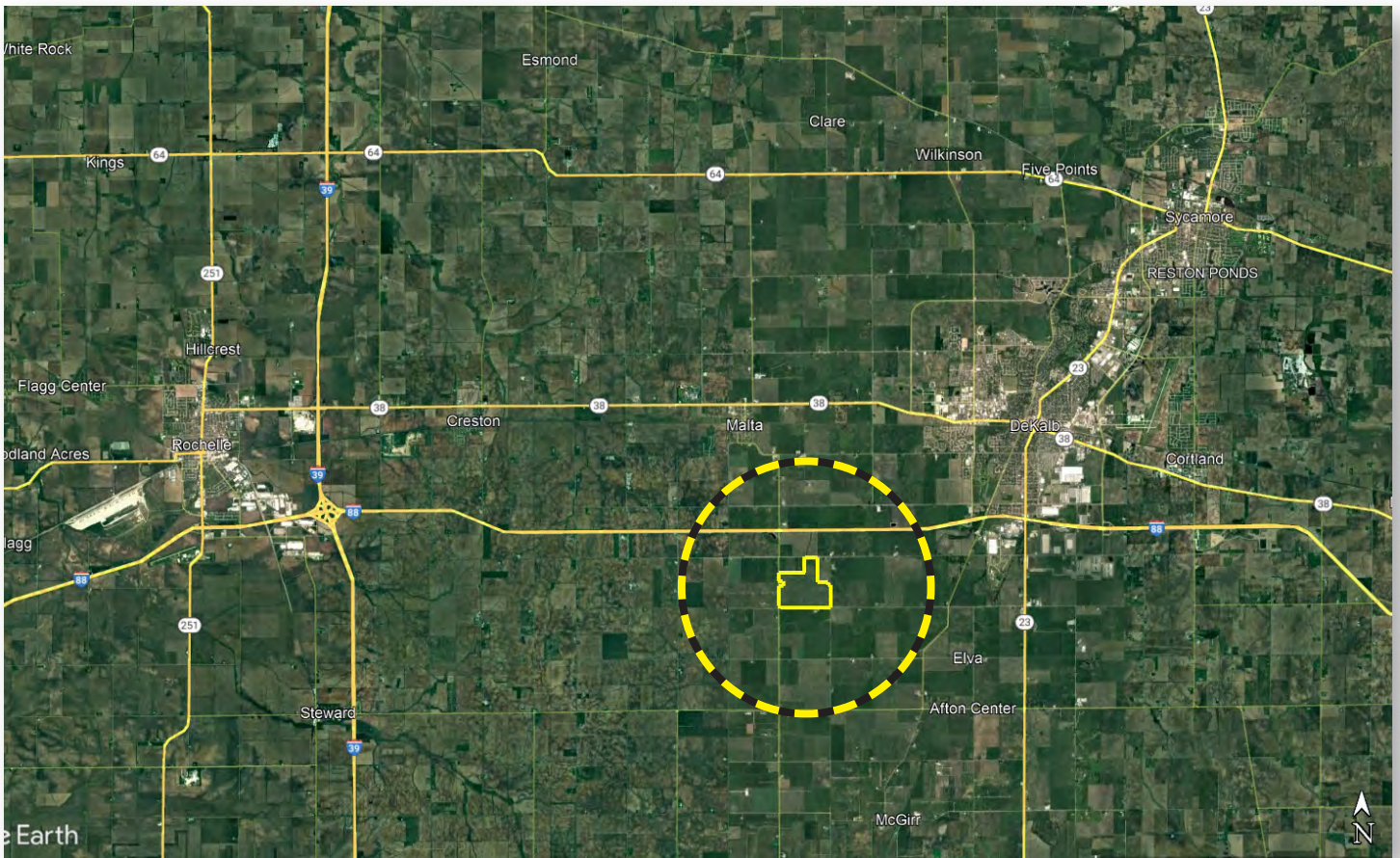
FSA 156EZ (Farm 7757, Tract 12014) 7

Survey. 8

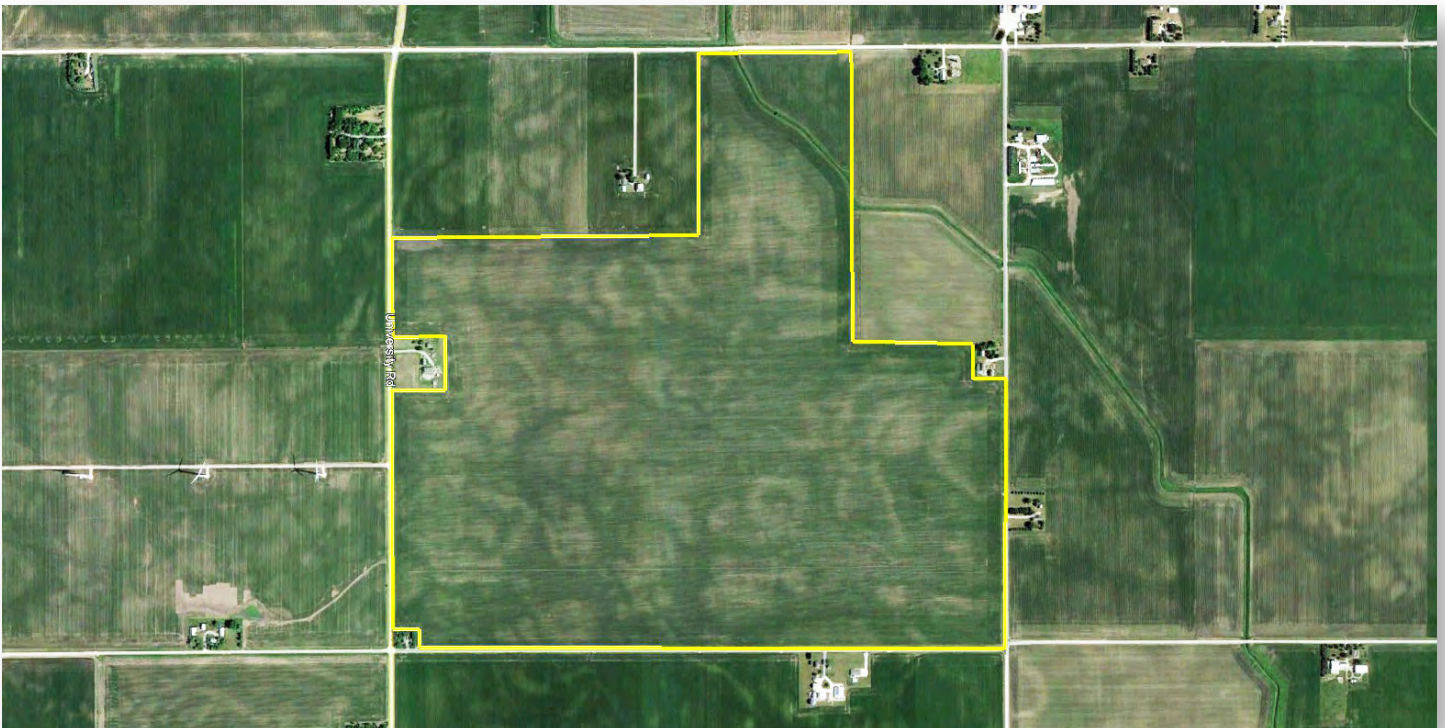
Property Photos 9



This information is from sources Land Pro LLC deems reliable, but is not guaranteed. Duplication, copying or distribution, in whole or part, is expressly prohibited without written authorization.



Jason J. Lestina, ALC AFM
Licensed IL, IN Real Estate Managing Broker | Accredited Land Consultant | Accredited Farm Manager
Land Pro LLC | 2681 US Hwy 34 | Oswego IL 60543 | 815.546.8276 | jason@landprollc.us



Boundaries and acreages are approximate.

Great Location! Class A Soils (PI=142.8)

acreage	-	467.6586± survey acres (458.32± FSA tillable acres)
description	-	the W½ of the NE¼, and part of the S½ of the NW¼, and most of the SW¼, and most of the SE¼, Section 1, Milan Township, T.39N.-R.3E., DeKalb County, Illinois
soils	-	Productivity Index - 142.8 Flanagan, Elpaso, Drummer, Catlin, Elburn, Harpster, Danabrook, Blackberry, Clare
taxes (2023)	-	\$27,782.52 total taxes (\$59.40/ac) no buildings
drainage district	-	Malta Milan Afton DeKalb Drainage #11
PIN	-	10.01.200.001, 10.01.300.003, 10.01.400.002
survey	-	February 22, 2016 (Page 9)
frontage	-	Gurler Road, Anderland Road, Keslinger Road, University Road

Blue Palm Yield History

	Corn	Soybeans
2023	-	57 (non-GMO)
2022	225.00	-
2021	-	72.50
2020	221.00	-
2019	-	58.50
2018	197.50	-
2017	256.00	-
2016	-	65.00
2015	190.00	-
2014	-	61.00
2013	204.00	-

FSA Information Farm 7757 | Tract 12014 ARC-County

Commodity	Base Acres	County Yield
Corn	300.82	159
Soybeans	146.48	45
Wheat	4.93	56

The Blue Palm Farm is located 6.5 miles southwest of DeKalb, 11.0 miles east of the I-88/I-39 Rochelle interchange, 41.7 miles southeast of Rockford, 69.5 miles west of Chicago, 104.0 miles northeast of Moline, 110.0 miles northeast of Bloomington, 176.0 miles northeast of Springfield.

GPS 41.878115, -88.828165



From the N 4th Street and IL 38 (Lincoln Highway) intersection in DeKalb, Illinois, travel southwest for 0.6 miles turning west on Taylor Street. Continue on Taylor Street for 0.8 miles, turning southwest on to 1st Street. Continue on 1st Street for 4.1 miles, then west on Keslinger Road for 6.4 miles. The Blue Palm Farm is located at the northwest corner of Keslinger Road and Anderland Road.

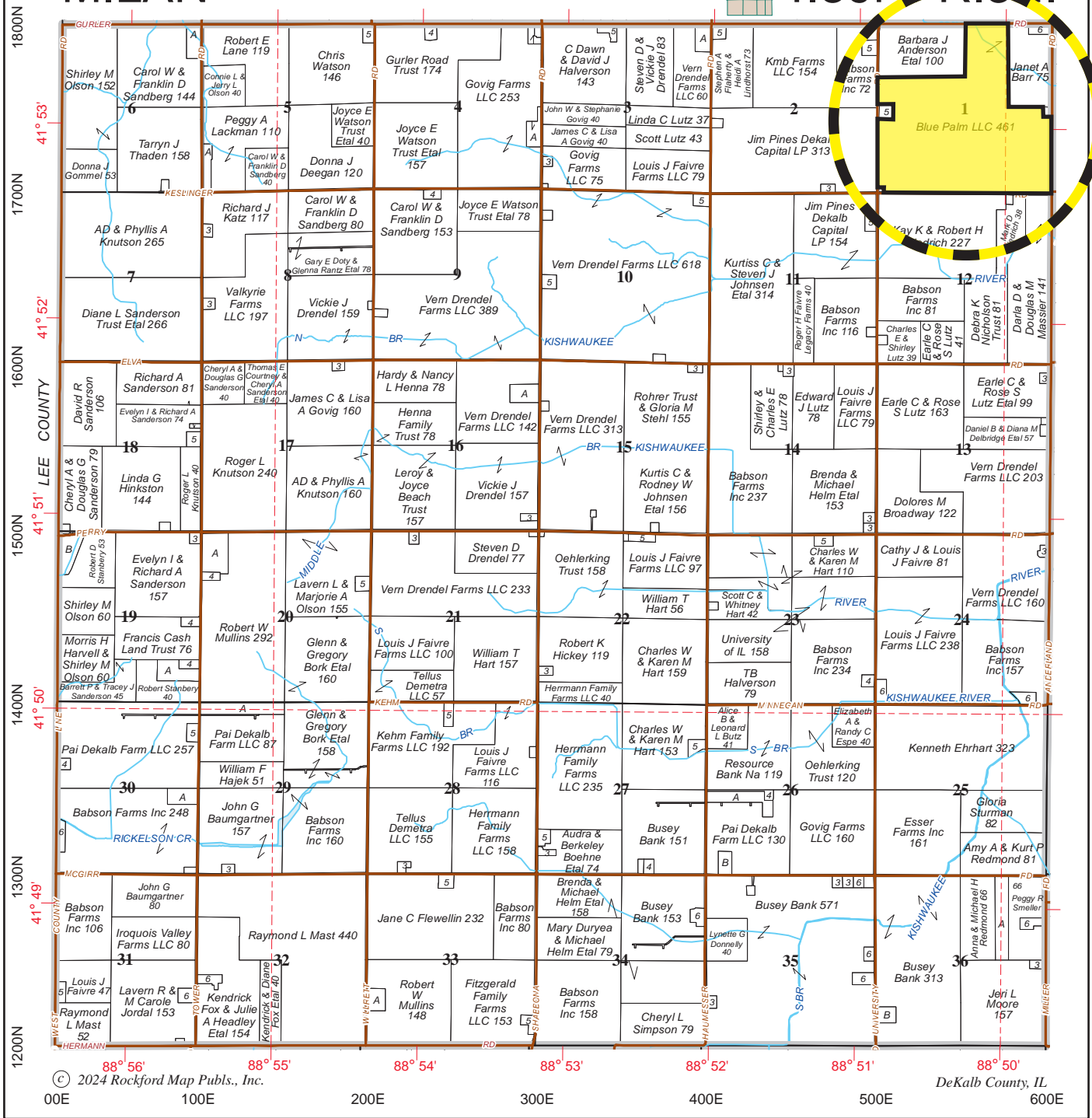


Boundaries and acreages are approximate.



MILAN

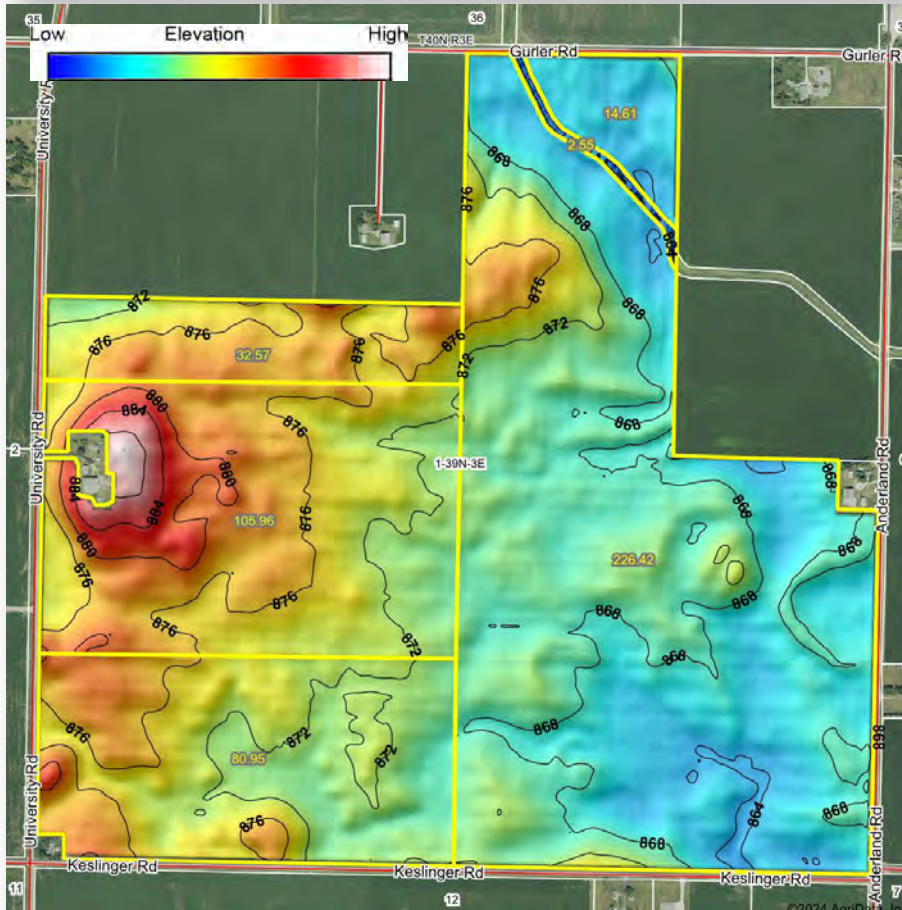
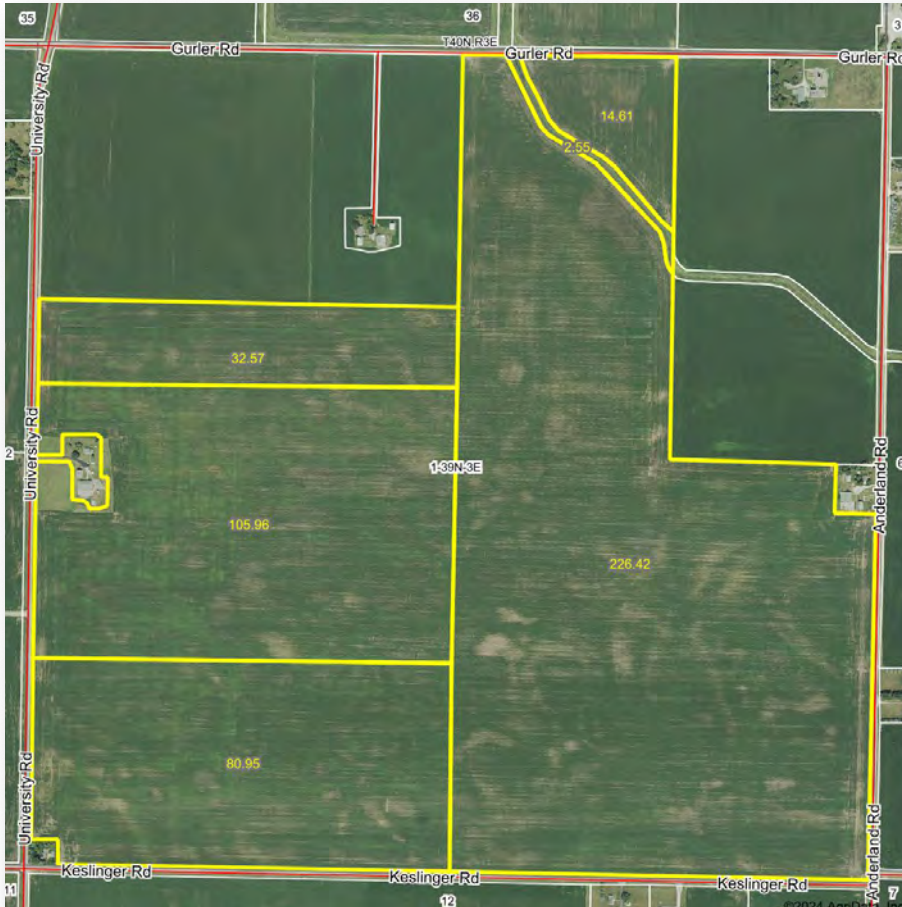
T.39N R.3E.



© 2024 Rockford Map Pubs., Inc. DeKalb County, IL

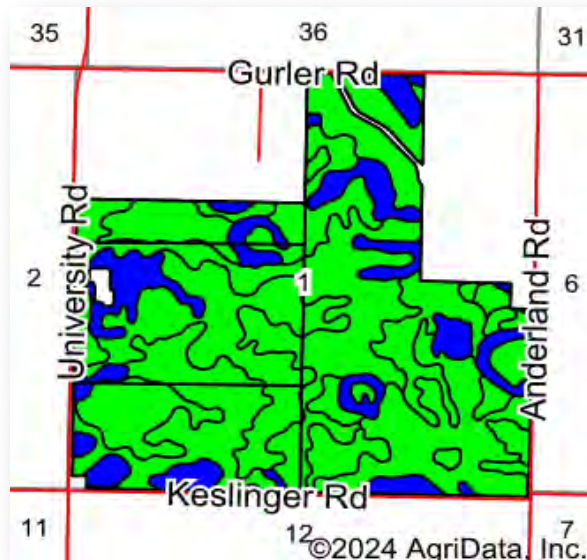
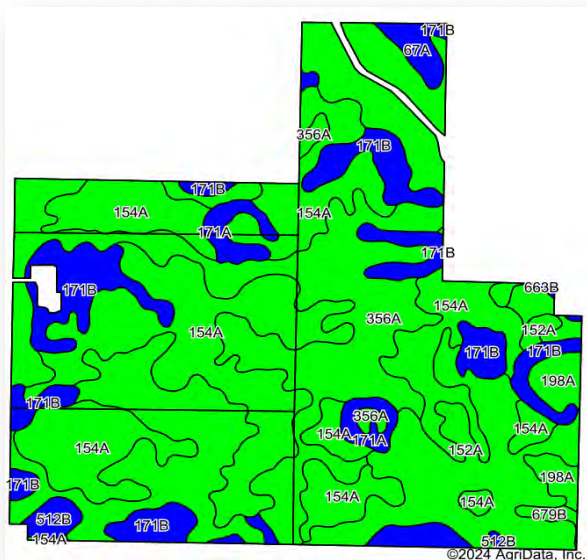
Boundaries and acreages are approximate.





Boundaries and acreages are approximate.





Area Symbol: IL037, Soil Area Version: 18

Code	Soil Description	Acres	Percent of field	II. State Productivity Index Legend	Subsoil rooting a	Corn Bu/A	Soybeans Bu/A	Wheat Bu/A	Grass-legume hay, T/A	Crop productivity index for optimum management
154A	Flanagan silt loam, 0 to 2 percent slopes	158.63	34.4%		FAV	194	63	77	5.90	144
**356A	Elpaso silty clay loam, 0 to 2 percent slopes	132.01	28.7%		FAV	**195	**63	**66	**5.80	**144
**152A	Drummer silty clay loam, 0 to 2 percent slopes	78.79	17.1%		FAV	**195	**63	**73	**5.60	**144
**171B	Catlin silt loam, 2 to 5 percent slopes	57.65	12.5%		FAV	**185	**58	**72	**6.70	**137
198A	Elburn silt loam, 0 to 2 percent slopes	12.93	2.8%		FAV	197	61	74	5.80	143
**171A	Catlin silt loam, 0 to 2 percent slopes	9.49	2.1%		FAV	**185	**58	**72	**6.70	**137
**67A	Harpster silty clay loam, 0 to 2 percent slopes	4.61	1.0%		FAV	**182	**57	**68	**5.40	**133
**512B	Danabrook silt loam, 2 to 5 percent slopes	4.16	0.9%		FAV	**185	**58	**72	**6.30	**137
**679B	Blackberry silt loam, 2 to 5 percent slopes	1.69	0.4%		FAV	**192	**59	**73	**6.90	**141
**663B	Clare silt loam, 2 to 5 percent slopes	0.55	0.1%		FAV	**180	**56	**69	**6.30	**133
Weighted Average						193	62.1	72.2	5.9	142.8

Soils data provided by USDA and NRCS. Soils data provided by University of Illinois at Champaign-Urbana.

Table: Optimum Crop Productivity Ratings for Illinois Soil EFOTG are sourced from Bulletin 811 calculated Map Unit Base Yield Indices, and adjusted (Adj) for slope, erosion, flooding, and surface texture. Publication Date: 02-08-2023
 Crop yields and productivity (B811 EFOTG) are maintained at the following USDA web site: 2023 Illinois Soil Productivity and Yield Indices: <https://efotg.sc.egov.usda.gov/#/state/IL/documents/section=2&folder=52809>

** Base indexes from Bulletin 811 adjusted for slope, erosion, flooding, and surface texture according to the II. Soils EFOTG
 e Soils in the well drained group were not rated for grass-legume and are shown with a zero "0".



Boundaries and acreages are approximate.



United States Department of Agriculture

DeKalb County, Illinois

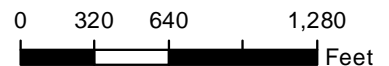


Common Land Unit	
Non-Cropland	Conservation Reserve Program
clu_classification_code	
Cropland	Tract Boundary
street100k_j_i_utm	

2024 Program Year
Map Created September 25, 2024

Tract Cropland Total: 458.32 acres

Farm 7757
Tract 12014



- Wetland Determination Identifiers**
- Restricted Use
 - Limited Restrictions
 - Exempt from Conservation
- Compliance Provisions**



United States Department of Agriculture (USDA) Farm Service Agency (FSA) maps are for FSA Program administration only. This map does not represent a legal survey or reflect actual ownership; rather it depicts the information provided directly from the producer and/or National Agricultural Imagery Program (NAIP) imagery. The producer accepts the data 'as is' and assumes all risks associated with its use. USDA-FSA assumes no responsibility for actual or consequential damage incurred as a result of any user's reliance on this data outside FSA Programs. Wetland identifiers do not represent the size, shape, or specific determination of the area. Refer to your original determination (CPA-026 and attached maps) for exact boundaries and determinations or contact USDA Natural Resources Conservation Service (NRCS).



Boundaries and acreages are approximate.

ILLINOIS
DEKALB
Form: FSA-156EZ



United States Department of Agriculture
Farm Service Agency

FARM : 7757
Prepared : 9/25/24 4:01 PM CST
Crop Year : 2024

Abbreviated 156 Farm Record

Operator Name :
CRP Contract Number(s) :
Recon ID :
Transferred From : No
ARCPLC G/IF Eligibility : Eli

Farm Land Data

Farmland	Cropland	DCP Cropland	WBP	EWP	WRP	GRP	Sugarcane	Farm Status	Number Of Tracts
460.87	458.32	458.32	0.00	0.00	0.00	0.00	0.0	Active	1
State Conservation	Other Conservation	Effective DCP Cropland	Double Cropped		CRP	MPL	DCP Ag.Rel. Activity	SOD	
0.00	0.00	458.32	0.00		0.00	0.00	0.00	0.00	

Crop Election Choice

ARC Individual	ARC County	Price Loss Coverage
None	WHEAT, CORN, SOYBN	None

DCP Crop Data

Crop Name	Base Acres	CCC-505 CRP Reduction Acres	PLC Yield	HIP
Wheat	4.93	0.00	56	
Corn	300.82	0.00	159	
Soybeans	146.48	0.00	45	0
TOTAL	452.23	0.00		

Tract Number : 12014

Description :
FSA Physical Location : ILLINOIS/DEKALB
ANSI Physical Location : ILLINOIS/DEKALB
BIA Unit Range Number :
HEL Status : NHEL: No agricultural commodity planted on undetermined fields
Wetland Status : Wetland determinations not complete
WL Violations : None
Owners : BLUE PALM, L.L.C.
Other Producers : None
Recon ID : 17-037-2019-17

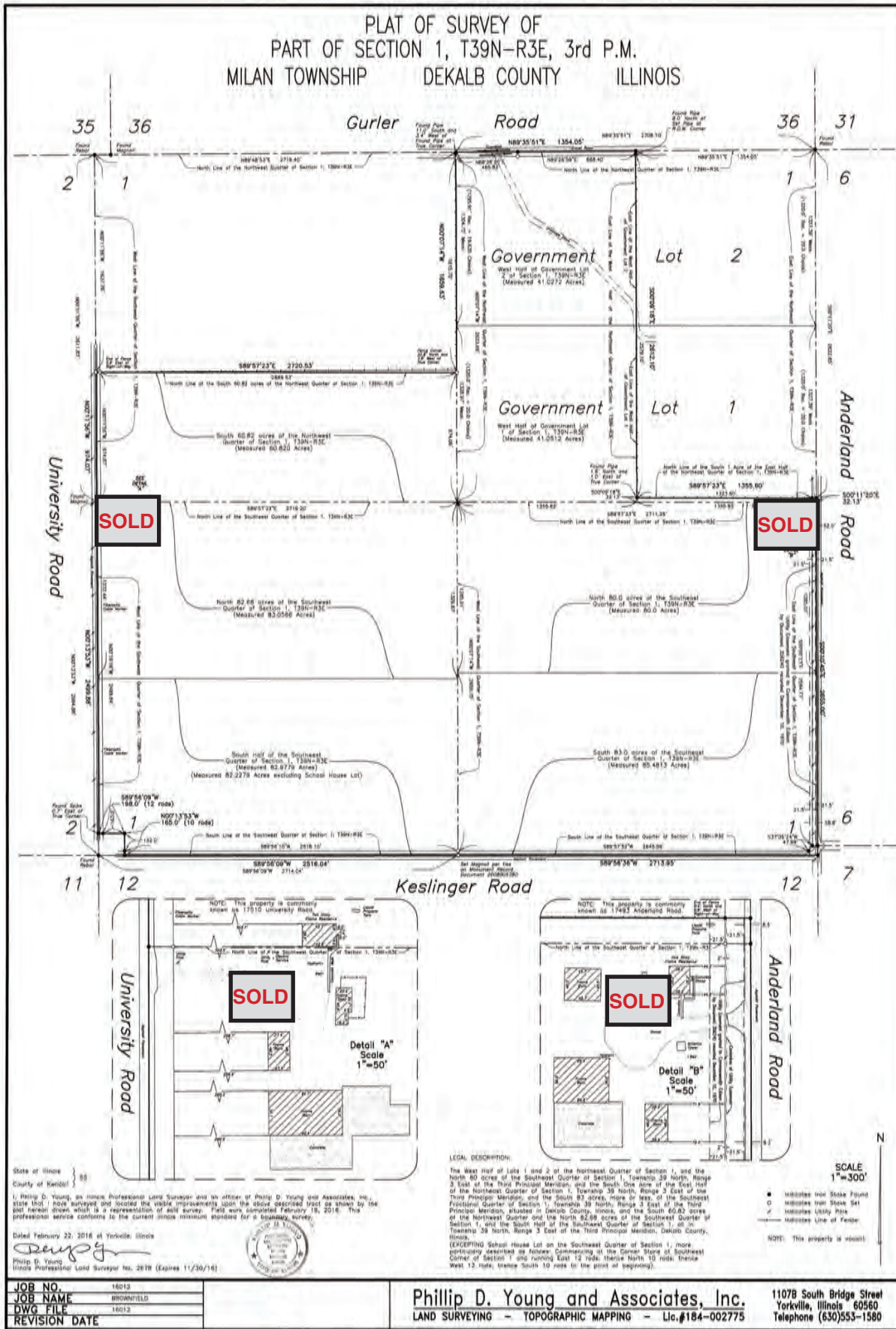
Tract Land Data

Farm Land	Cropland	DCP Cropland	WBP	EWP	WRP	GRP	Sugarcane
460.87	458.32	458.32	0.00	0.00	0.00	0.00	0.0

DCP Crop Data

Crop Name	Base Acres	CCC-505 CRP Reduction Acres	PLC Yield
Wheat	4.93	0.00	56
Corn	300.82	0.00	159
Soybeans	146.48	0.00	45
TOTAL	452.23	0.00	





Boundaries and acreages are approximate.





Professional Land Specialists

Jason J. Lestina ALC AFM

Licensed Illinois Real Estate Managing Broker
Licensed Indiana Real Estate Managing Broker
Accredited Land Consultant
Accredited Farm Manager



Land Brokerage | Farm Management
Land Auctions | Land Consulting



815.546.8276c | jason@landprollc.us
Land Pro LLC | 2681 US Hwy 34 | Oswego IL 60543 | www.landprollc.us