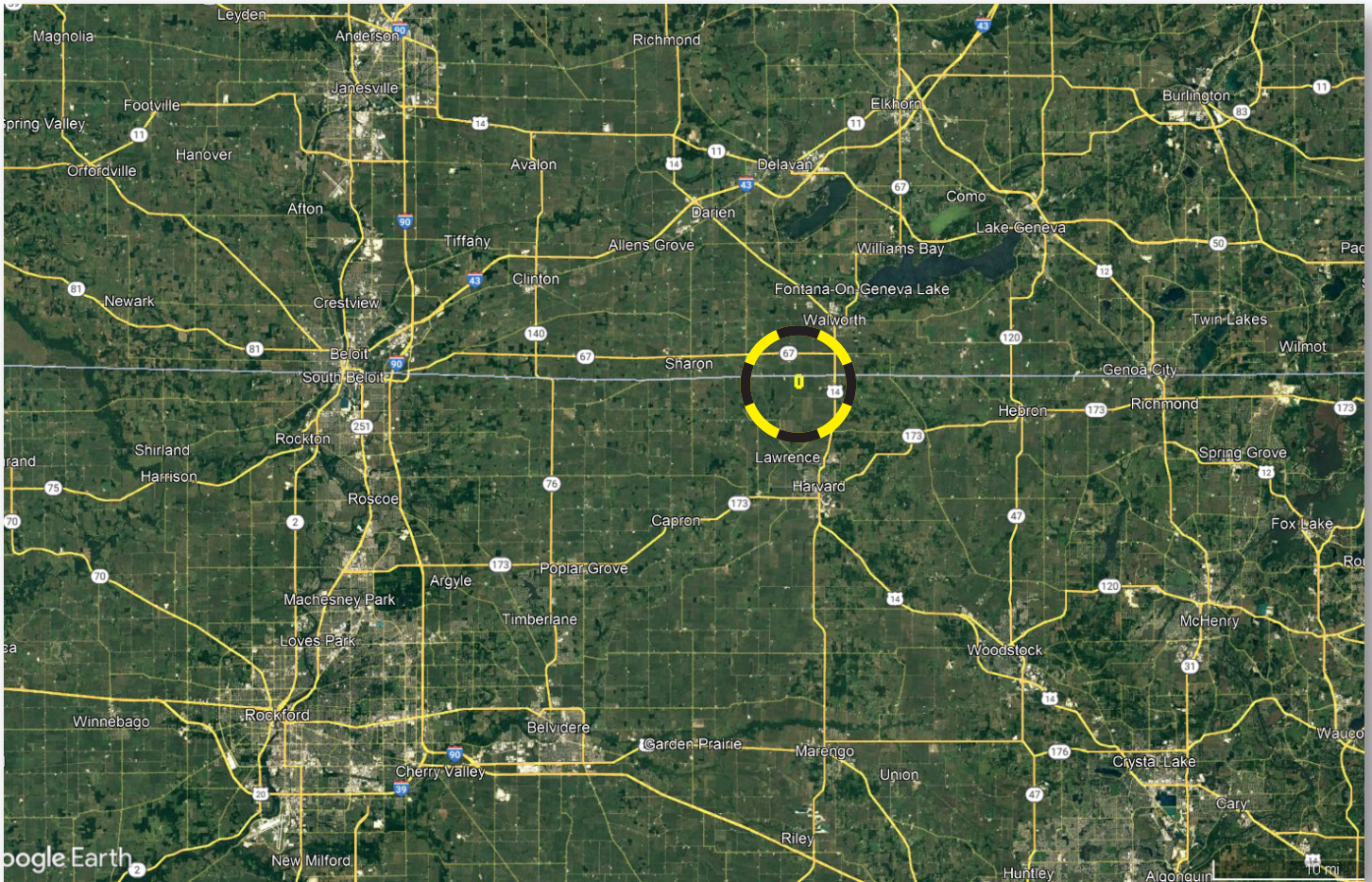


Lohman Trust Farm

82.75± tax acres (80.30± tillable acres) | Section 3 | Chemung Township | T.46N.-R.5E. | McHenry County, IL

This information is from sources Land Pro LLC deems reliable, but is not guaranteed. Duplication, copying or distribution, in whole or part, is expressly prohibited without written authorization. Property is not currently listed for sale with Land Pro LLC.



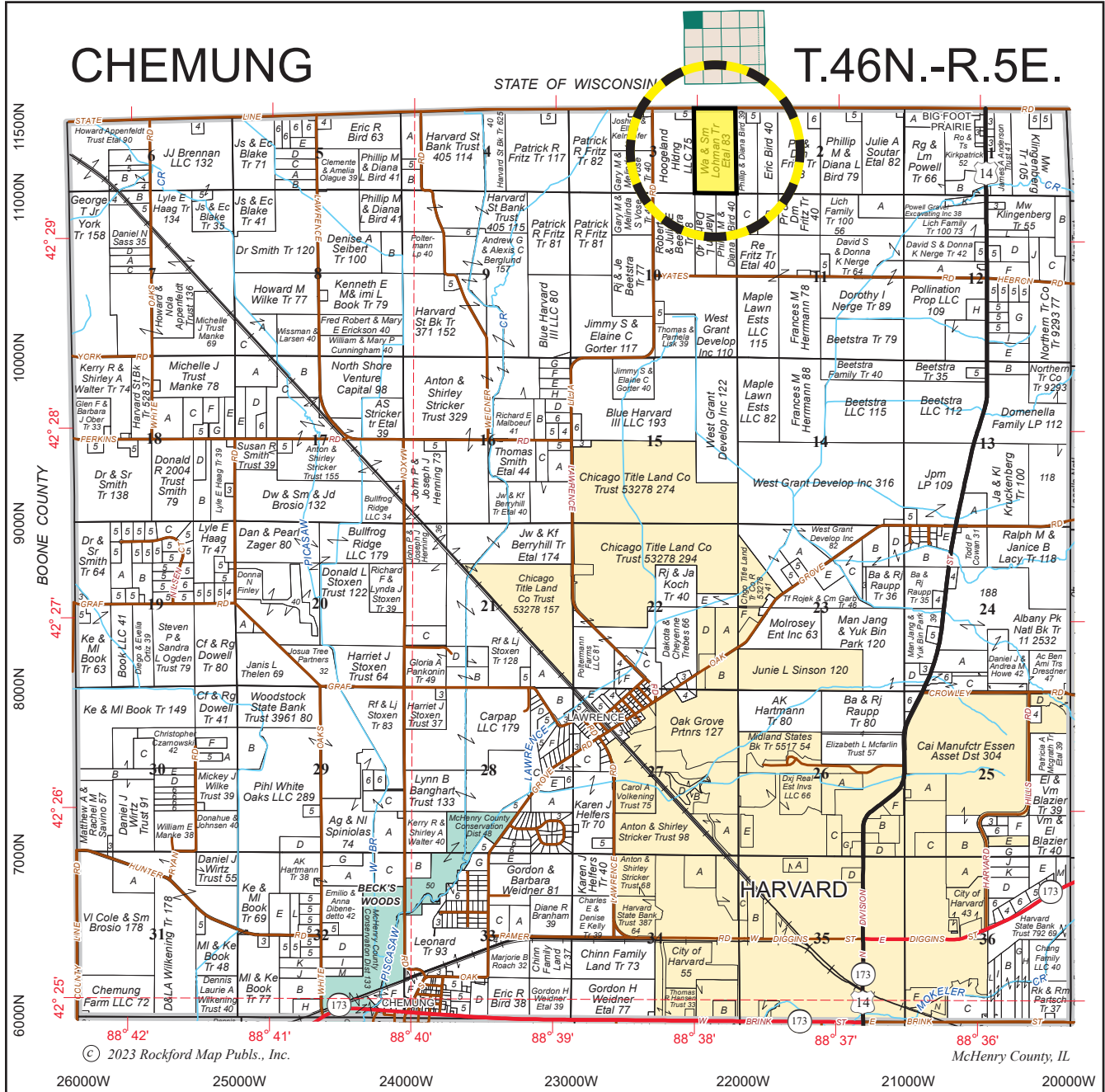
Ray L. Brownfield, ALC AFM | Designated Managing Broker, Owner
Land Pro LLC | 2681 US Hwy 34 | Oswego IL 60543 | 630.258.4800 | ray@landprollc.us



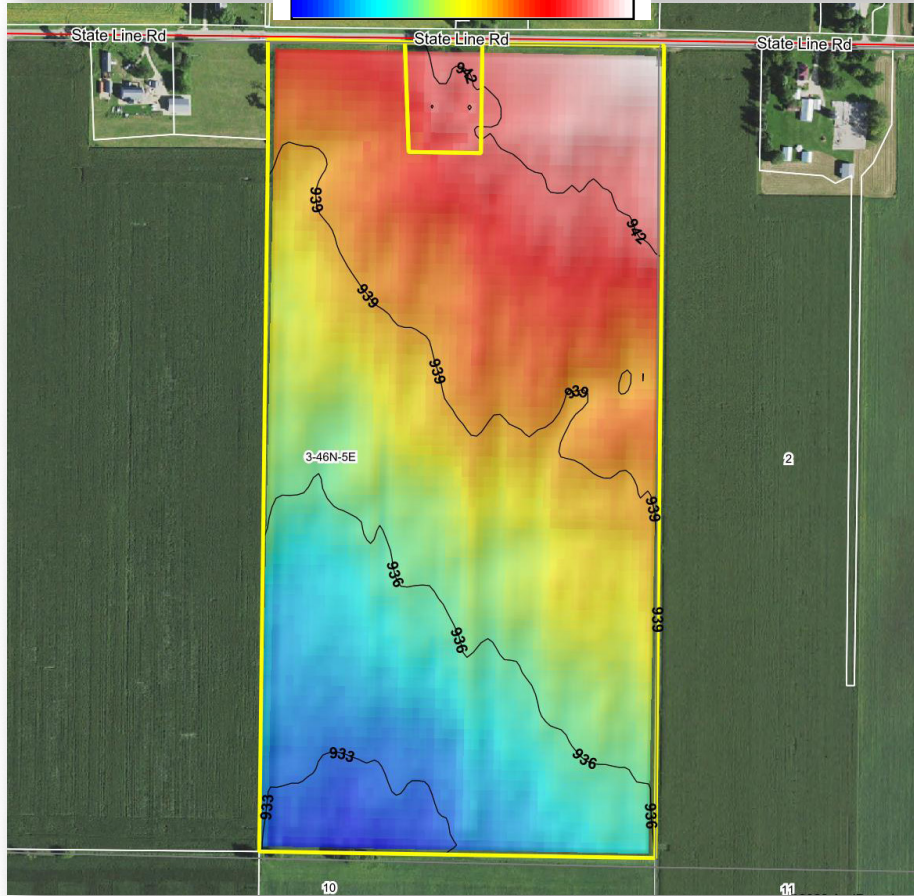
Boundaries and acreages are approximate.

Class A Soils

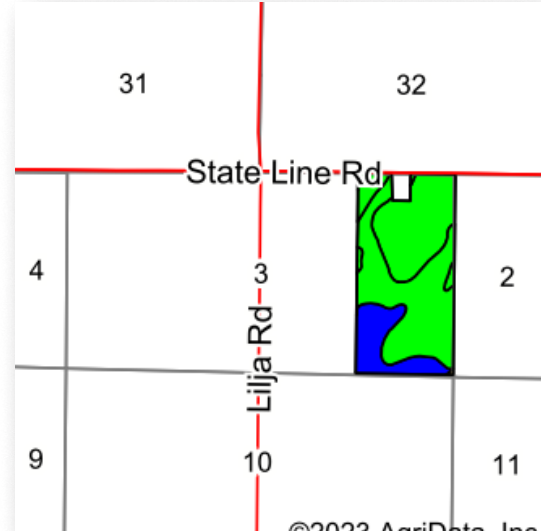
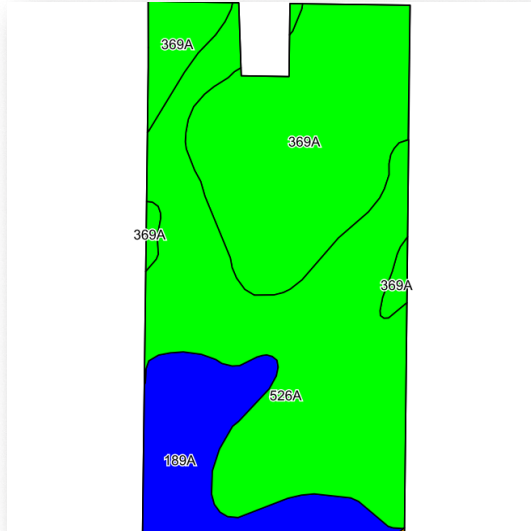
acreage	- 82.75± tax acres (80.30± tillable acres)
description	- the E½ of the NE¼ of Section 3 in Chemung Township, T.46N.-R.5E., McHenry County, IL
soils	- Productivity Index - 137.0 (Grundelein, Waupecan, Martinton, Thorp)
taxes (2022)	- \$7,820.58 (\$94.50/ac)
buildings	- home + buildings
PIN	- 01.03.200.002, 01.03.400.002
frontage	- State Line Road



Boundaries and acreages are approximate.



Boundaries and acreages are approximate.



Area Symbol: IL111, Soil Area Version: 19

Code	Soil Description	Acres	Percent of field	Il. State Productivity Index Legend	Corn Bu/A	Soybeans Bu/A	Wheat Bu/A	Alfalfa d hay, T/A	Grass-legume e hay, T/A	Crop productivity index for optimum management
526A	Grundein silt loam, 0 to 2 percent slopes	36.78	45.8%	 	186	61	71	0.00	5.30	138
369A	Waupecan silt loam, 0 to 2 percent slopes	29.84	37.2%	 	189	59	74	6.90	0.00	139
189A	Martinton silt loam, 0 to 2 percent slopes	13.59	16.9%	 	173	57	70	0.00	5.40	130
206A	Thorp silt loam, 0 to 2 percent slopes	0.09	0.1%	 	170	55	66	0.00	5.10	126
Weighted Average					184.9	59.6	71.9	2.6	3.3	137

Table: Optimum Crop Productivity Ratings for Illinois Soil EFOTG are sourced from Bulletin 811 calculated Map Unit Base Yield Indices, and adjusted (Adj) for slope, erosion, flooding, and surface texture. Publication Date: 02-08-2023

Crop yields and productivity (B811 EFOTG) are maintained at the following USDA web site: 2023 Illinois Soil Productivity and Yield Indices

** Base indexes from Bulletin 811 adjusted for slope and erosion according to the II Soils EFOTG

d Soils in the poorly drained group were not rated for alfalfa and are shown with a zero "0".

e Soils in the well drained group were not rated for grass-legume and are shown with a zero "0".

Soils data provided by USDA and NRCS. Soils data provided by University of Illinois at Champaign-Urbana.

4.1 mi SW of Walworth WI
 6.8 mi N of Harvard IL
 29.7 mi SE of Janesville WI
 35.7 mi NE of Rockford IL
 68.2 mi SE of Madison WI
 82.0 mi NW of Chicago IL
 GPS 42.49504, -88.63173
 (points are to center of the city)



Boundaries and acreages are approximate.