

Mount Zion Township Farm

80.07 surveyed acres | Section 8 | Mount Zion Township | Macon County Illinois



10.4.19



Pat Tomlinson
Real Estate Broker

Land Pro LLC

217.864.5733c | pat@landprollc.us

2681 US Hwy 34 | Oswego IL 60543

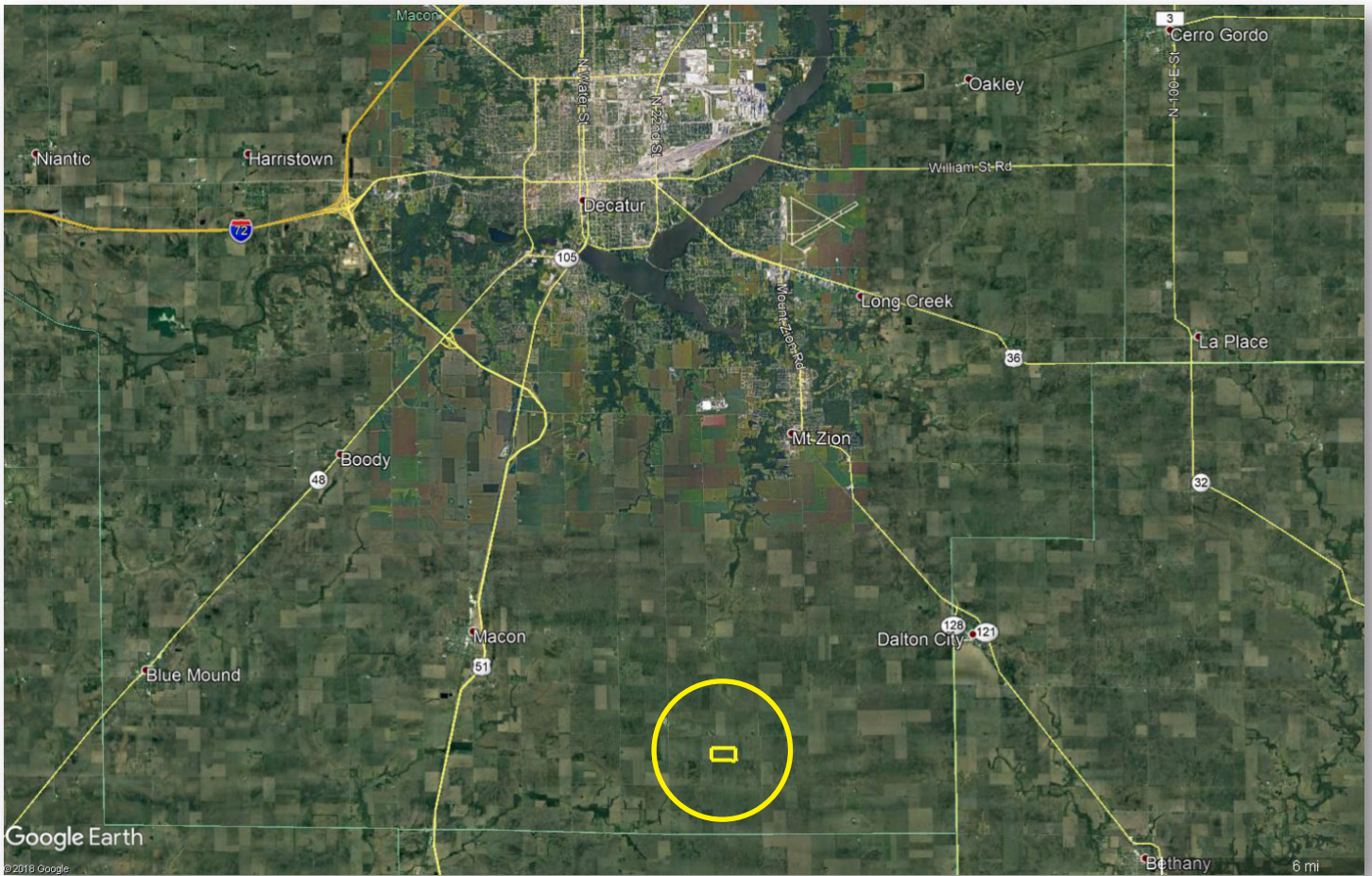
331.999.3490 | www.landprollc.us

November 8, 2019

Professional Land Specialists

Mount Zion Township Farm

80.07 surveyed acres | 78.77± tillable acres | Section 8 | Mount Zion Township | T.14N.-R.3E. | Macon County Illinois



Pat Tomlinson | Real Estate Broker
Land Pro LLC | 217.864.5733 | pat@landprollc.us



This information is from sources Land Pro deems reliable, but is not guaranteed. Duplication, copying or distribution, in whole or part, is expressly prohibited without written authorization.

ACREAGE

80.07 surveyed acres
78.77± tillable acres

SOILS

Productivity Index - 139.8
predominantly Drummer-Milford, Flanagan

DESCRIPTION

The S½ of the NW¼ of Section 8, Mount Zion Township, T.14N.-R.3E., Macon County Illinois

PRICE

\$880,770 (\$11,000/ac)

TAXES (2018)

\$3,019.30 (\$37.70/ac)
Sanner Chapel Mutual Drainage District

PIN

11.21.08.100.002

No BUILDINGS

SURVEY

Survey on Page 7.

FARM LEASE

Lease open for 2020

FRONTAGE

Milam Road

Mount Zion Township Farm Yields		
	Corn	Soybeans
2019	-	66.0
2018	272.0	-
2017	-	75.0
2016	233.0	-
2015	230.0	-

Nutrien Ag Solutions October 26, 2019 (averages)	
Ph	6.2
P1	52.3
K1	330



DRIVING DIRECTIONS

(Points are to the center of the city.)

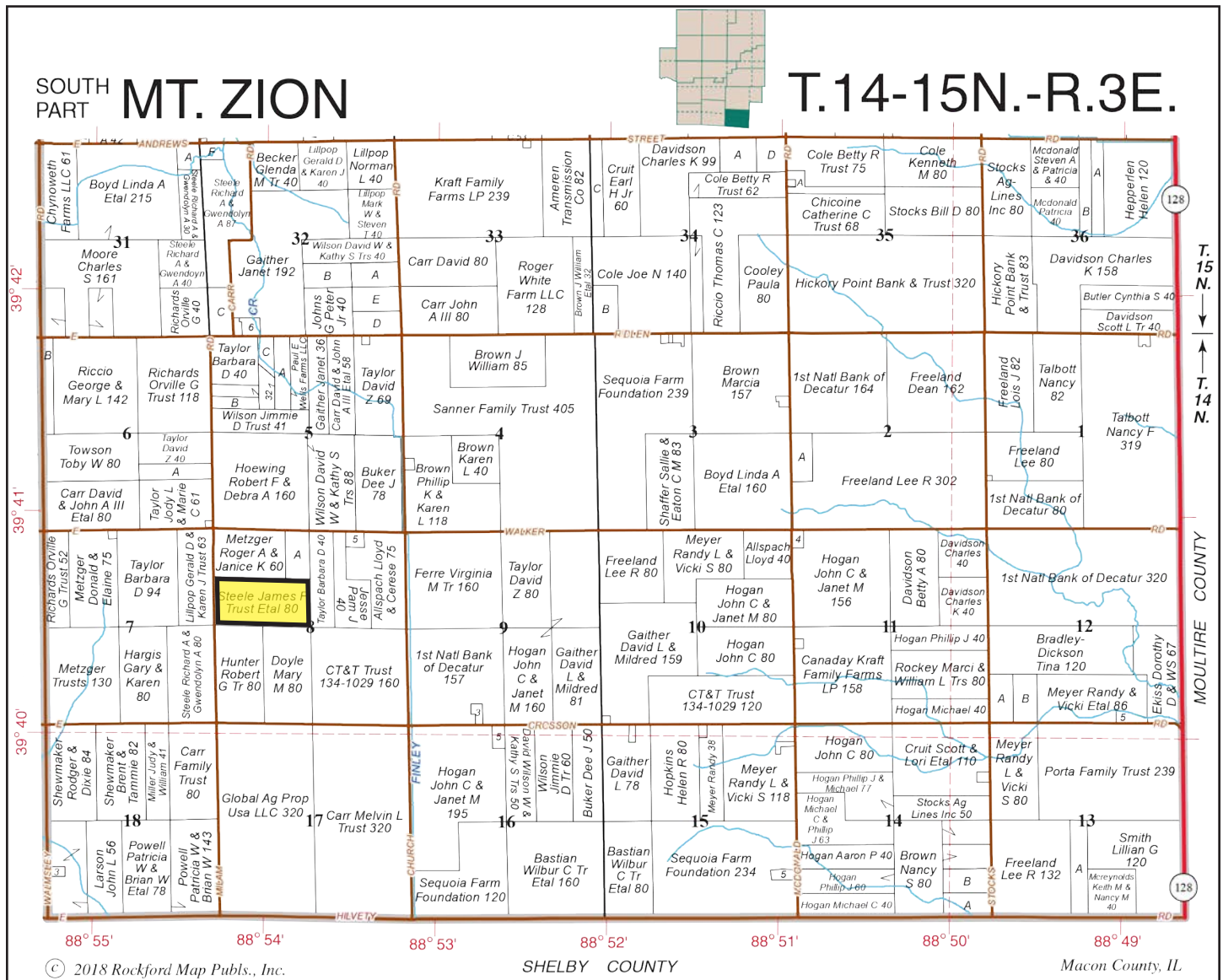
- 7.2± mi SE of Macon IL
- 16.4± mi S of Decatur IL
- 46.9± mi SE of Springfield IL
- 66.4± mi S of Bloomington IL
- 185.0± mi SE of Moline IL
- 199.0± mi S of Rockford IL
- 202.0± mi SW of Chicago IL
- GPS 39.677169, -88.905036





SOUTH PART MT. ZION

T.14-15N.-R.3E.



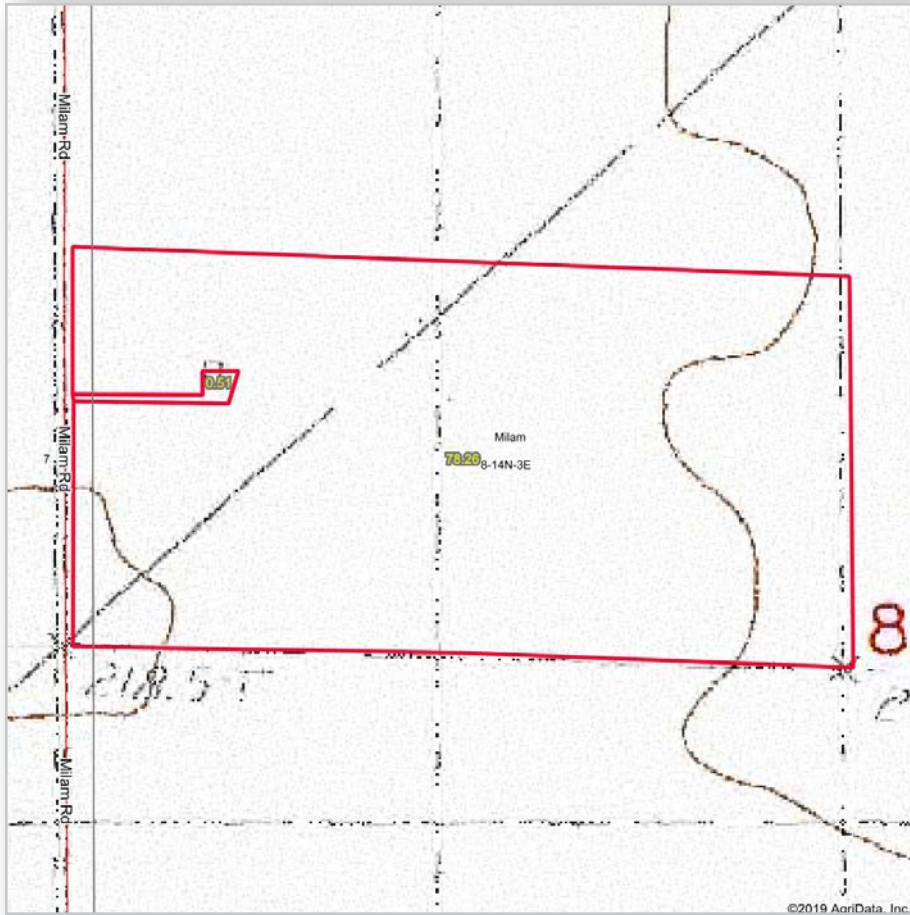
© 2018 Rockford Map Publs., Inc.

SHELBY COUNTY

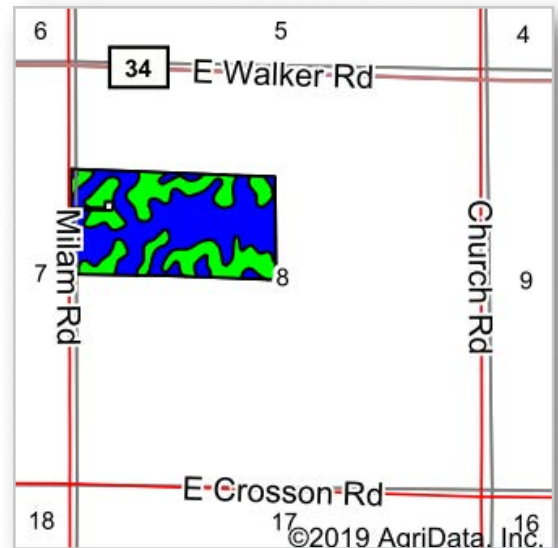
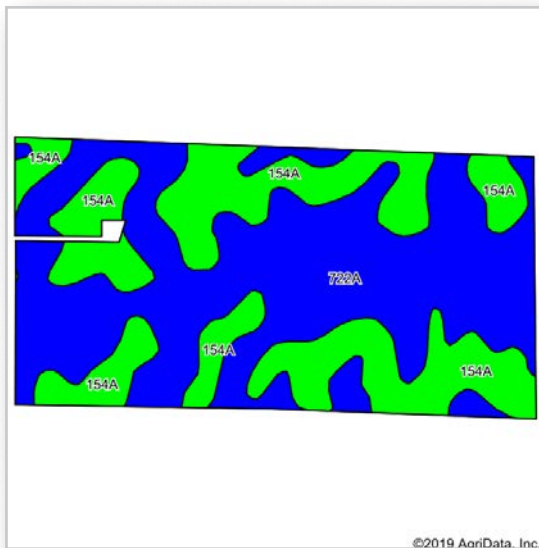
Macon County, IL



10.4.19



Boundaries and acreages are approximate.



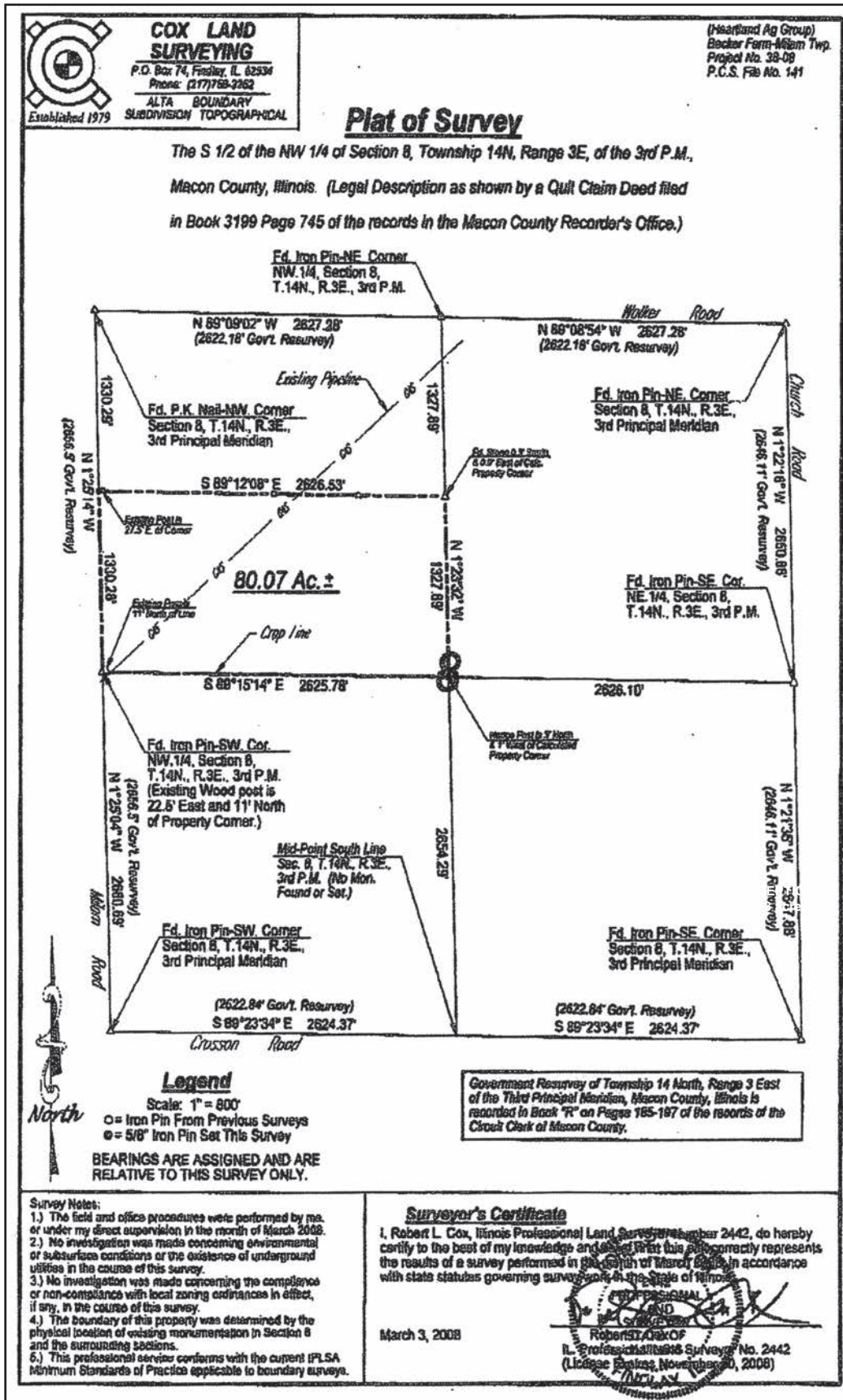
Area Symbol: IL 115, Soil Area Version: 15

Code	Soil Description	Acres	Percent of field	Il. State Productivity Index Legend	Subsoil rooting a	Corn Bu/A	Soybeans Bu/A	Wheat Bu/A	Alfalfa d hay, T/A	Grass-legume e hay, T/A	Crop productivity index for optimum management
722A	Drummer-Milford silty clay loams, 0 to 2 percent slopes	47.35	60.5%		FAV	184	60	70	0.00	5.65	137
154A	Flanagan silt loam, 0 to 2 percent slopes	30.91	39.5%		FAV	194	63	77	0.00	5.90	144
Weighted Average						187.9	61.2	72.8	0.00	5.75	139.8

Table: Optimum Crop Productivity Ratings for Illinois Soil by K.R. Olson and J.M. Lang, Office of Research, ACES, University of Illinois at Champaign-Urbana. Version: 1/2/2012 Amended Table S2 B811
 Crop yields and productivity indices for optimum management (B811) are maintained at the following NRES web site: <http://soilproductivity.nres.illinois.edu/>
 ** Indexes adjusted for slope and erosion according to Bulletin 811 Table S3
 a UNF = unfavorable; FAV = favorable
 d Soils in the poorly drained group were not rated for alfalfa and are shown with a zero "0".
 e Soils in the well drained group were not rated for grass-legume and are shown with a zero "0".
 *c: Using Capabilities Class Dominant Condition Aggregation Method
 Soils data provided by USDA and NRCS. Soils data provided by University of Illinois at Champaign-Urbana.

10.4.19





Land Brokerage | Farm Management | Land Auctions | Land Consulting

Pat Tomlinson

Real Estate Broker



based out of Decatur Illinois

217.864.5733c | pat@landprollc.us

2681 US Hwy 34 | Oswego IL 60543 | www.landprollc.us

Professional Land Specialists