

Schott Farm

74.58± surveyed acres | Section 13 | Essex Township | Kankakee County Illinois



looking northwest 6.8.18



12.27.18

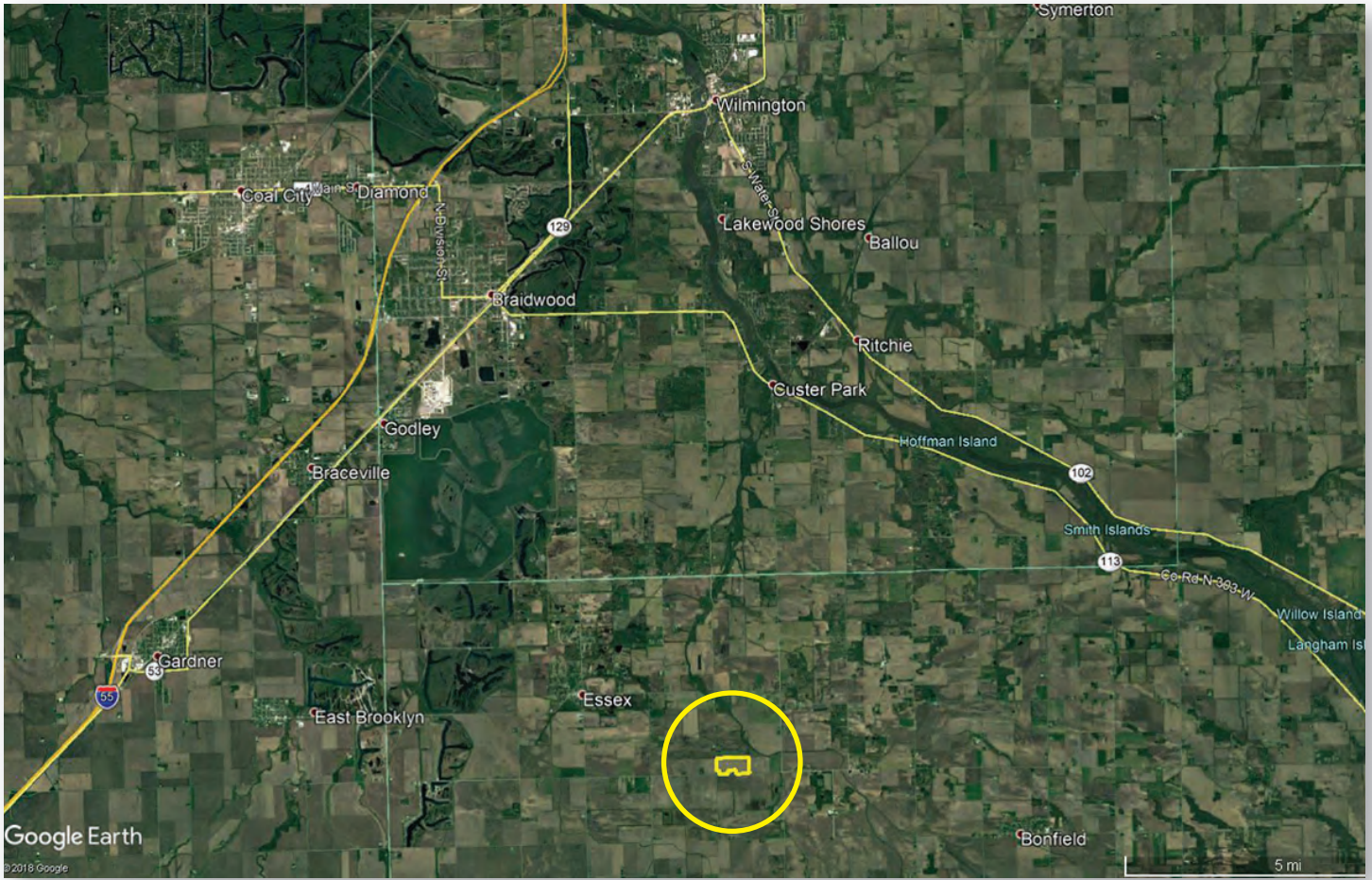
Jason Lestina AFM
Real Estate Broker
Accredited Farm Manager
815.546.8276c | jason@landprollc.us
Land Pro LLC
2681US Hwy 34 | Oswego IL 60543
331.999.3490 | www.landprollc.us

Professional Land Real Estate Specialists

Schott Farm

74.58± surveyed acres | 71.37± tillable acres | Section 13 | Essex Township | T.31N.-R.9E. | Kankakee County Illinois

This information is from sources Land Pro deems reliable, but is not guaranteed. Property may be withdrawn from market or be subject to a price or terms change without notice. Duplication, copying or distribution, in whole or part, is expressly prohibited without written authorization.



Jason Lestina AFM | Accredited Farm Manager, Broker
Land Pro LLC | 2681 US Hwy 34 | Oswego IL 60543 | 815.546.8276c | jason@landprollc.us



ACREAGE

74.58± surveyed acres

71.37± tillable acres

SOILSProductivity Index - 113.4
predominantly Bonfield, Ade**DESCRIPTION**Most of the S½ of the SW¼ of Section 13,
T.31N.-R.9E., Essex Township, Kankakee
County, Illinois**PRICE**

\$512,049

TAXES (2017)

\$934.64 (\$12.59/ac)

PIN

09.06.13.300.013

09.06.13.300.015

IMPROVEMENTS

None

BOUNDARY FRONTAGE

Co Hwy 14000 N

W 3000 N Road

YIELDS

Corn (2016) - 200 bushels per acre

Soybeans (2017) - 52 bushels per acre

EASEMENTS

Petroleum Pipeline

Natural Gas Pipeline

**DRIVING DIRECTIONS**

3.5± mi SE of Essex, IL

18.2± mi NW of Kankakee, IL

73.1± mi SW of Chicago, IL

76.4± mi NE of Bloomington, IL

123.0± mi SE of Rockford, IL

143.0± mi NE of Springfield, IL

145.0± mi SE of Moline, IL

GPS 41.159763, -88.144609



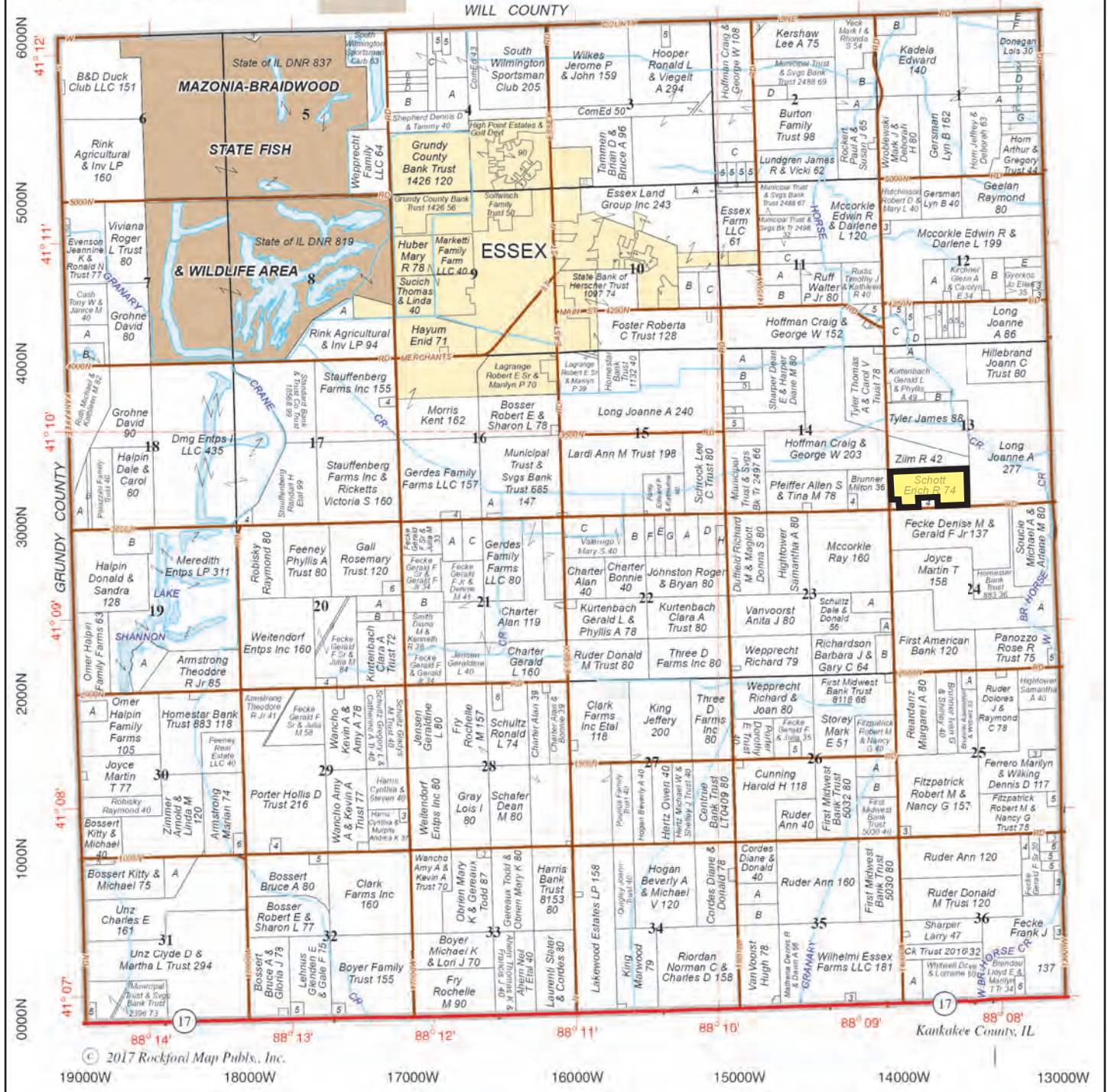
looking north 6.8.18

Boundaries and acreages are approximate.



ESSEX

T.31N.-R.9E.

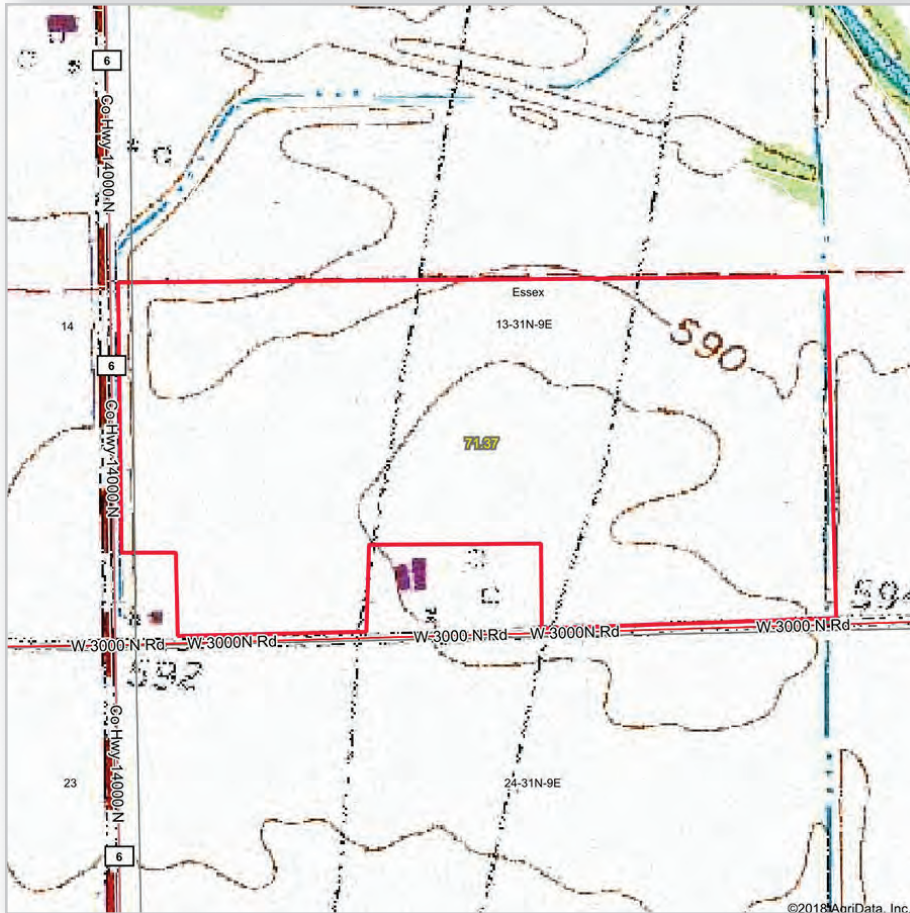


© 2017 Rockford Map Pubs., Inc.

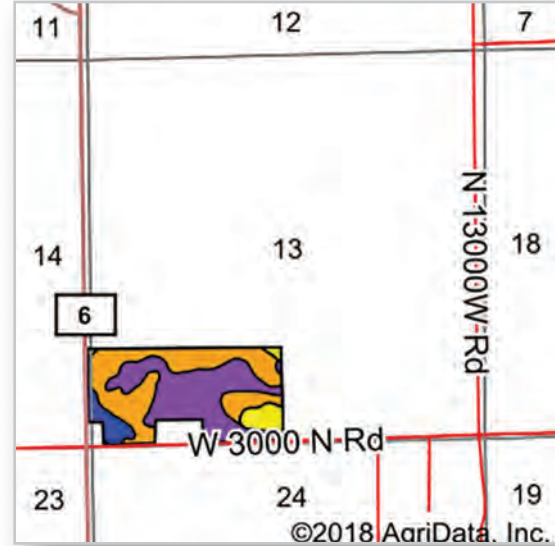
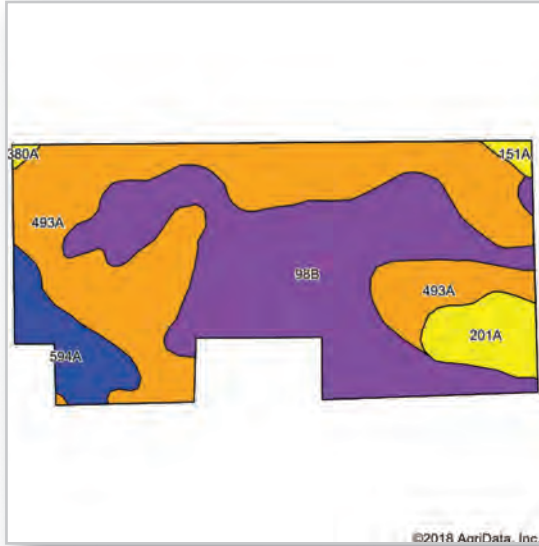
19000W 18000W 17000W 16000W 15000W 14000W 13000W

Boundaries and acreages are approximate.





Boundaries and acreages are approximate.



Code	Soil Description	Acres	Percent of field	Il. State Productivity Index Legend	Subsoil rooting a	Corn Bu/A	Soybeans Bu/A	Wheat Bu/A	Alfalfa d hay, T/A	Grass-legume e hay, T/A	Crop productivity index for optimum management
493A	Bonfield loam, 0 to 2 percent slopes	31.70	44.4%		FAV	164	54	64	0.00	4.77	122
**98B	Ade loamy fine sand, 1 to 6 percent slopes	29.62	41.5%		FAV	**134	**47	**57	0.00	**4.22	**102
594A	Reddick clay loam, 0 to 2 percent slopes	4.84	6.8%		FAV	177	56	66	0.00	5.14	130
201A	Gilford fine sandy loam, 0 to 2 percent slopes	4.38	6.1%		FAV	148	49	59	0.00	4.52	110
151A	Ridgeville fine sandy loam, 0 to 2 percent slopes	0.59	0.8%		FAV	151	51	63	0.00	5.02	114
380A	Fieldon loam, 0 to 2 percent slopes	0.24	0.3%		FAV	151	51	60	0.00	5.02	114
Weighted Average						151.3	50.9	60.9	0.00	4.55	113.4

Table: Optimum Crop Productivity Ratings for Illinois Soil by K.R. Olson and J.M. Lang, Office of Research, ACES, University of Illinois at Champaign-Urbana. Version: 1/2/2012 Amended Table S2 B811
 Crop yields and productivity indices for optimum management (B811) are maintained at the following NRES web site: <http://soilproductivity.nres.illinois.edu/>
 ** Indexes adjusted for slope and erosion according to Bulletin 811 Table S3
 a UNF = unfavorable; FAV = favorable
 d Soils in the poorly drained group were not rated for alfalfa and are shown with a zero "0".
 e Soils in the well drained group were not rated for grass-legume and are shown with a zero "0".

*c: Using Capabilities Class Dominant Condition Aggregation Method

Soils data provided by USDA and NRCS. Soils data provided by University of Illinois at Champaign-Urbana



looking north 6.8.18

Boundaries and acreages are approximate.



Kankakee County, Illinois



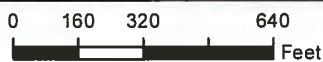
Common Land Unit

- Non-Cropland
- Cropland

Wetland Determination Identifiers

- Restricted Use
- Limited Restrictions
- Exempt from Conservation Compliance Provisions

Tract Boundary



2018 Program Year

Map Created April 13, 2018

Farm 10237

Tract 12359

Tract Cropland Total: 71.37 acres

United States Department of Agriculture (USDA) Farm Service Agency (FSA) maps are for FSA Program administration only. This map does not represent a legal survey or reflect actual ownership; rather it depicts the information provided directly from the producer and/or National Agricultural Imagery Program (NAIP) imagery. The producer accepts the data 'as is' and assumes all risks associated with its use. USDA-FSA assumes no responsibility for actual or consequential damage incurred as a result of any user's reliance on this data outside FSA Programs. Wetland identifiers do not represent the size, shape, or specific determination of the area. Refer to your original determination (CPA-026 and attached maps) for exact boundaries and determinations or contact USDA Natural Resources Conservation Service (NRCS).

DIRT

It's what we know.



Jason Lestina AFM
Accredited Farm Manager | Broker
815.546.8276c | jason@landprollc.us
2681 US Hwy 34 | Oswego IL 60543
331.999.3490 | www.landprollc.us

Land Brokerage
Land Auctions
Land Management
Land Consulting